

# Setup Guide

for use of XL Motion Controller with ROSS® DashBoard  
application

Version 1.1

# Table of Contents

1. Introduction .....	- 1 -
2. Setup in Dashboard Software .....	- 2 -
3. Operation of the slider .....	- 4 -
3.1 Connect to the Slider .....	- 4 -
3.2 Manual Movements .....	- 6 -
3.3 Speed/Acceleration setting.....	- 6 -
4. Memory Positions .....	- 8 -
4.1 Saving & Recalling Positions.....	- 8 -

## 1. Introduction

The XL Motion Controller is capable of being controlled via Panasonic® AW-series PTZ Control protocol via Ethernet Interface.

As the ROSS DashBoard supports to control a Panasonic AW-UE150 camera via a Plugin also the Slider can be controlled via this protocol.

Before setup the System, make sure the License Option is activated in your XL Motion Controller.

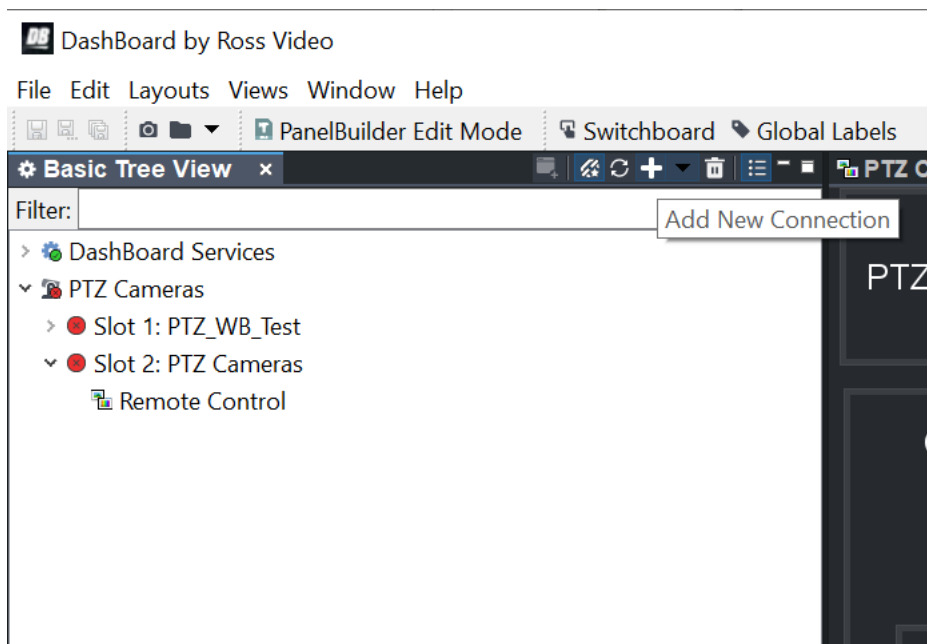
This can be checked via Motion Control Software via Ethernet or via the Config Tool via USB.

Also, the activation code can be entered via the Motion Control Software of Config Tool. Check Chapter “Control via Ethernet” in the XL Motion Controller Manual that can be found here: <https://waterbird.at/support/>

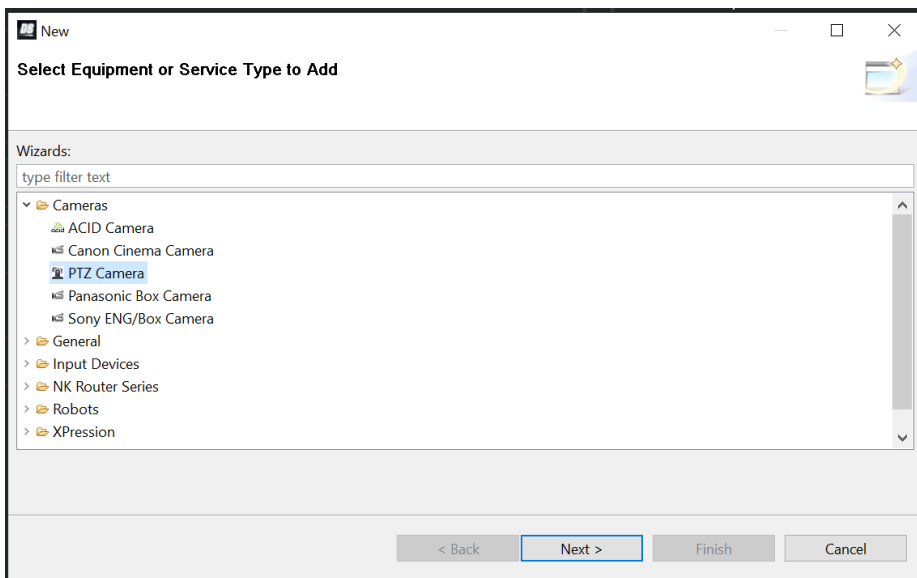
## 2. Setup in Dashboard Software

Before beginning the Setup, make sure you have the License in ROSS DashBoard Software for controlling Panasonic PTZ Cameras (AW-UE150) installed.

- 1) Open Dashboard Software
- 2) Click on the Plus Symbol for Add New Connection right to the Basic Tree Window



- 3) A new Window appears. Here select Cameras / “PTZ Camera” and click Next.



- 4) In the next windows select the IP address of the Slider.

Make sure all Devices (PC and XL Motion Controller) are in the same Network and set to the same IP Subnet.

XL Motion Controllers Standard IP is 192.168.2.20. You can use the Config Utility for setting to another IP address. Please refer to XL Motion Controllers User Manual how to change IP address. (Manual and Config Tool to be found here: <https://waterbird.at/support/> )

In the Field display Name choose a name for the Slider. e.g. Waterbird\_XLMC\_Rail\_System

Select the Model “Panasonic AW-UE150”.

Click “Finish” button.

New PTZ Cameras Connection

**PTZ Cameras Connection**

This wizard allows you to create a connection to a PTZ Cameras device.

IP Address: 192.192.2.20

Display Name: Waterbird\_XLMC\_Rail\_System

Slot: 1

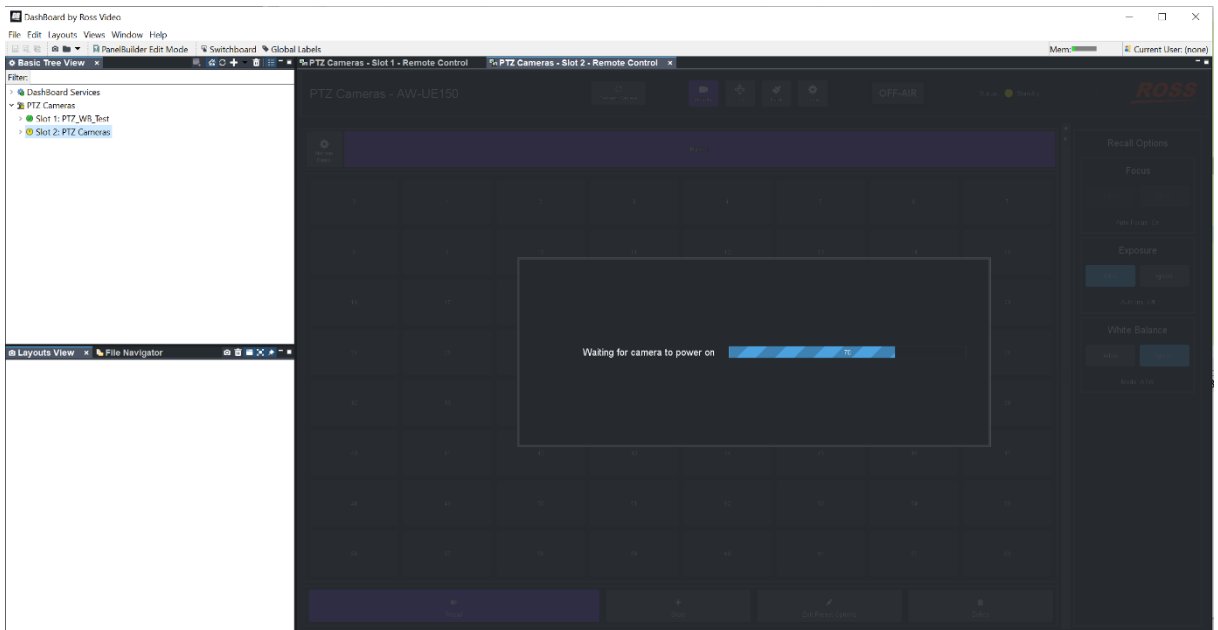
Model: Panasonic AW-UE150

< Back Next > Finish Cancel

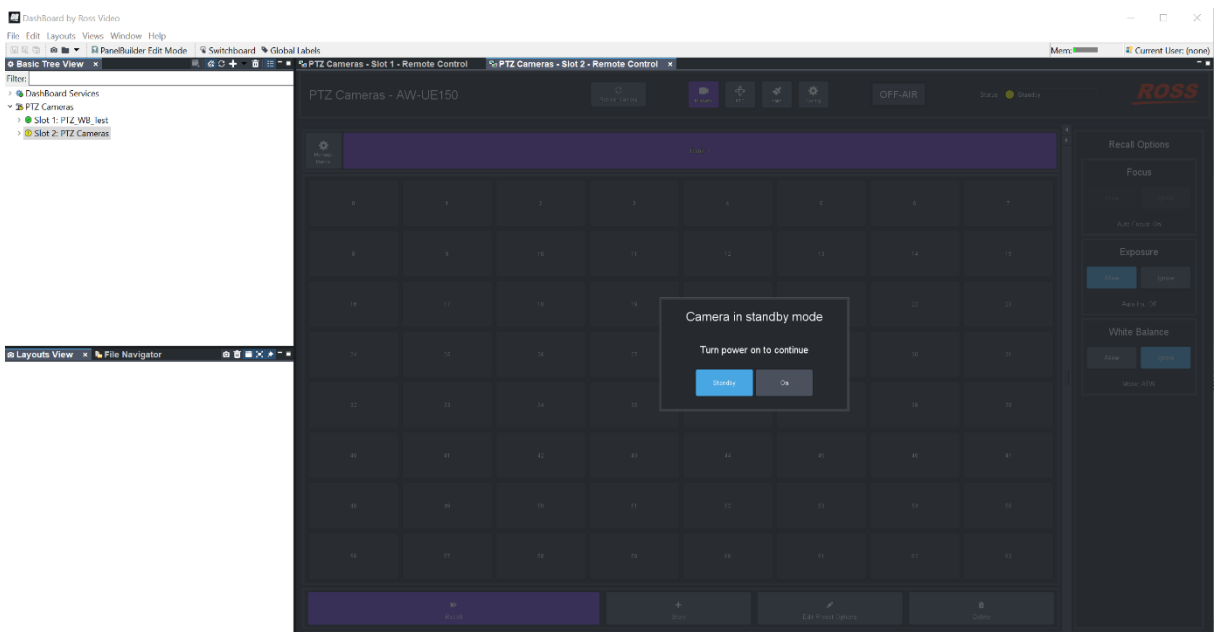
## 3. Operation of the slider

### 3.1 Connect to the Slider

During startup the message “Waiting for camera to power on” appears. This will take some time (randomly 5 sek to 1 minute)

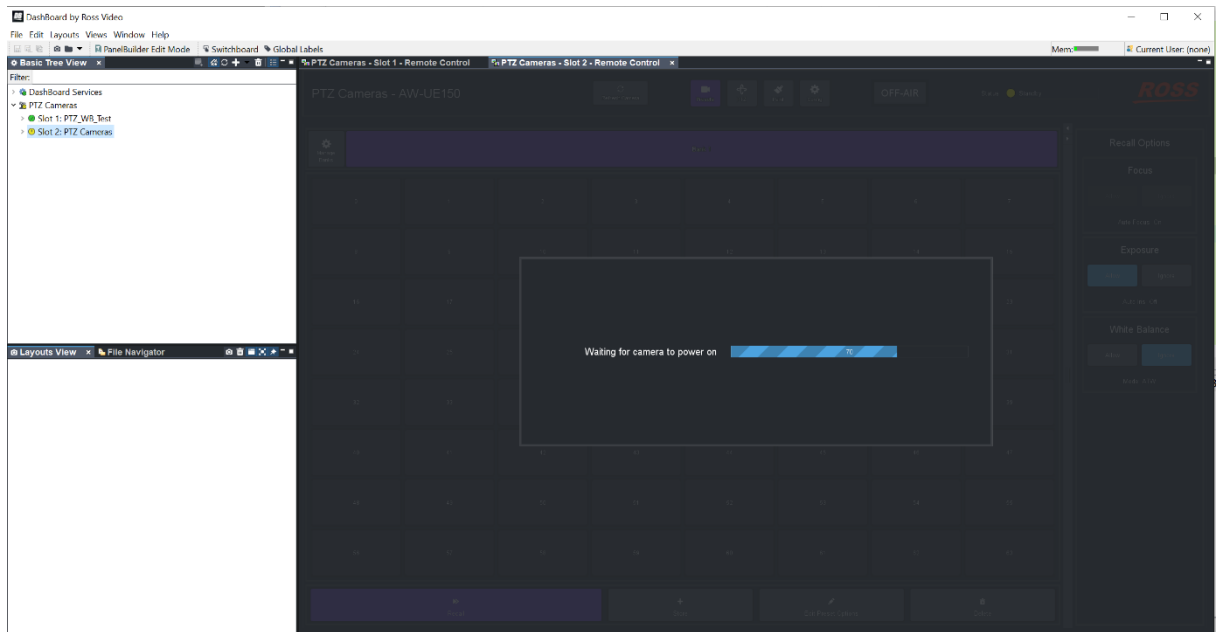


Then after this time the prompt for power on the camera appears. Click on “On” before the window disappears. The slider will do the reference run.

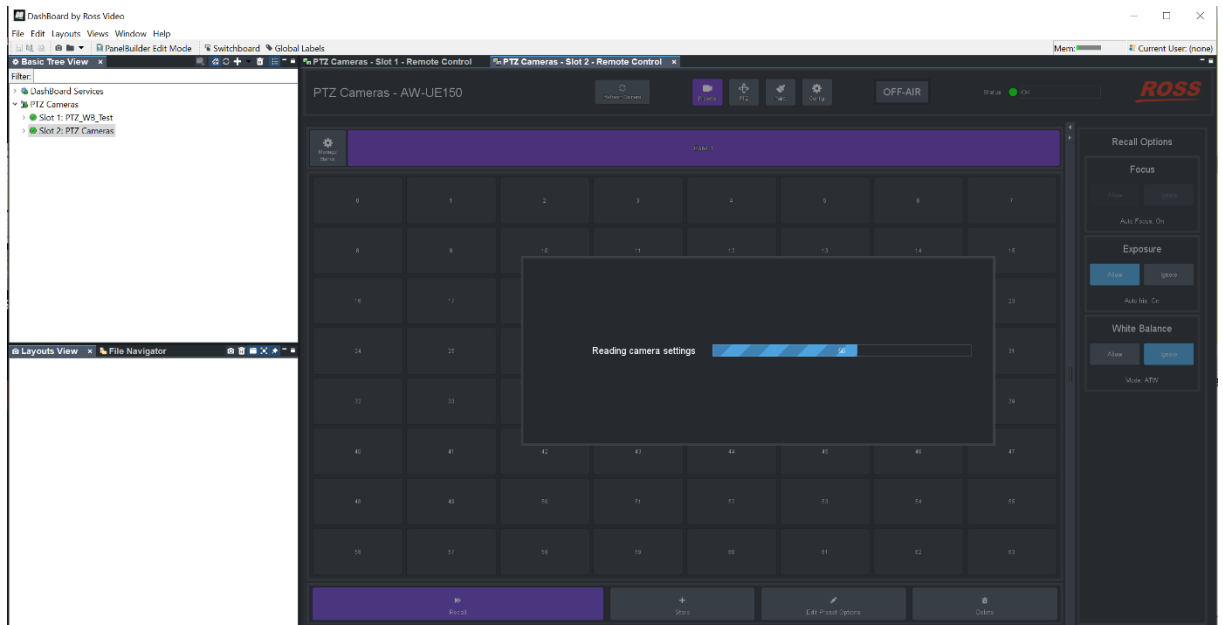


## Setup Guide – XL Motion Controller with Panasonic® Remote Camera Controllers

While this is ongoing again the message “Waiting for camera to power on” appears:

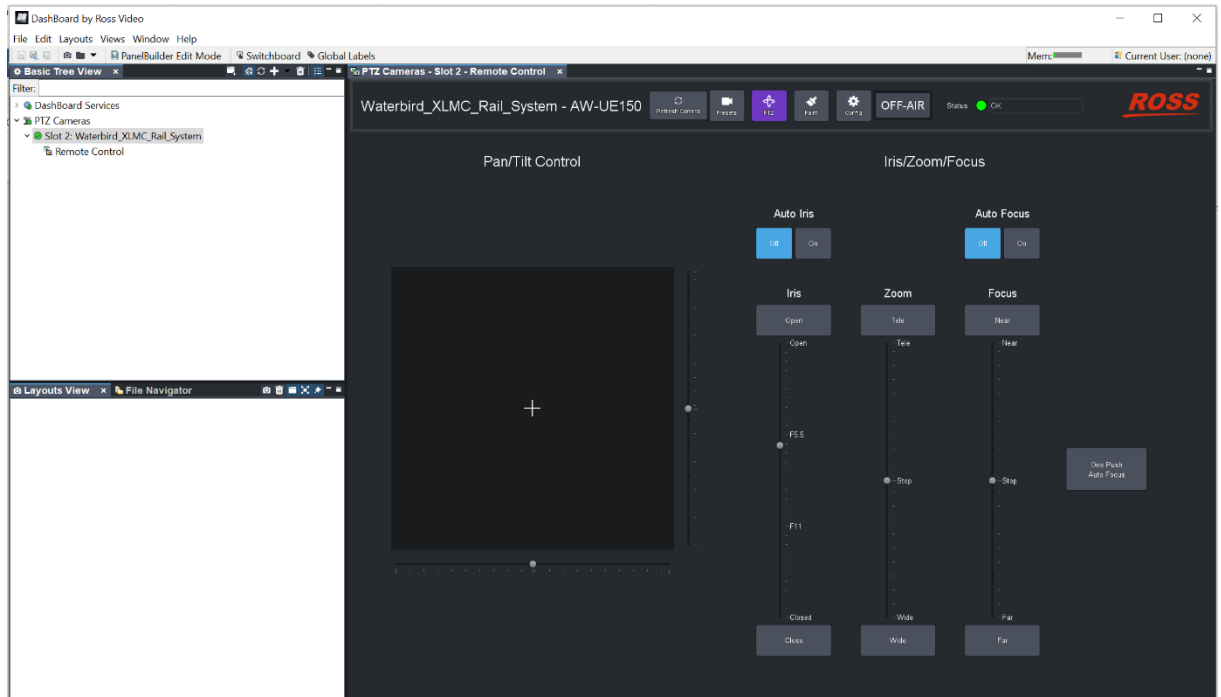


Some second after the reference run finished the message “Reading camera settings” appears for some seconds:



## 3.2 Manual Movements

The Slider can be moved via the Pan Control by selecting the Tab “PTZ” and drag the Crosshair left and right. Another option is to use the Zoom Slide bar to control the Sliders Movement.



## 3.3 Speed/Acceleration setting

Select Slider Speed:

The Slider Speed can be selected via the Iris setting.

Open -> Fastest Speed

Closed -> Slowest Speed

If Auto Iris is on the speed is set to 50% of maximal speed.

Select Slider Acceleration (Speed Ramp):

The Acceleration (Damping ramps of speed change) can be changed via the Focus setting.

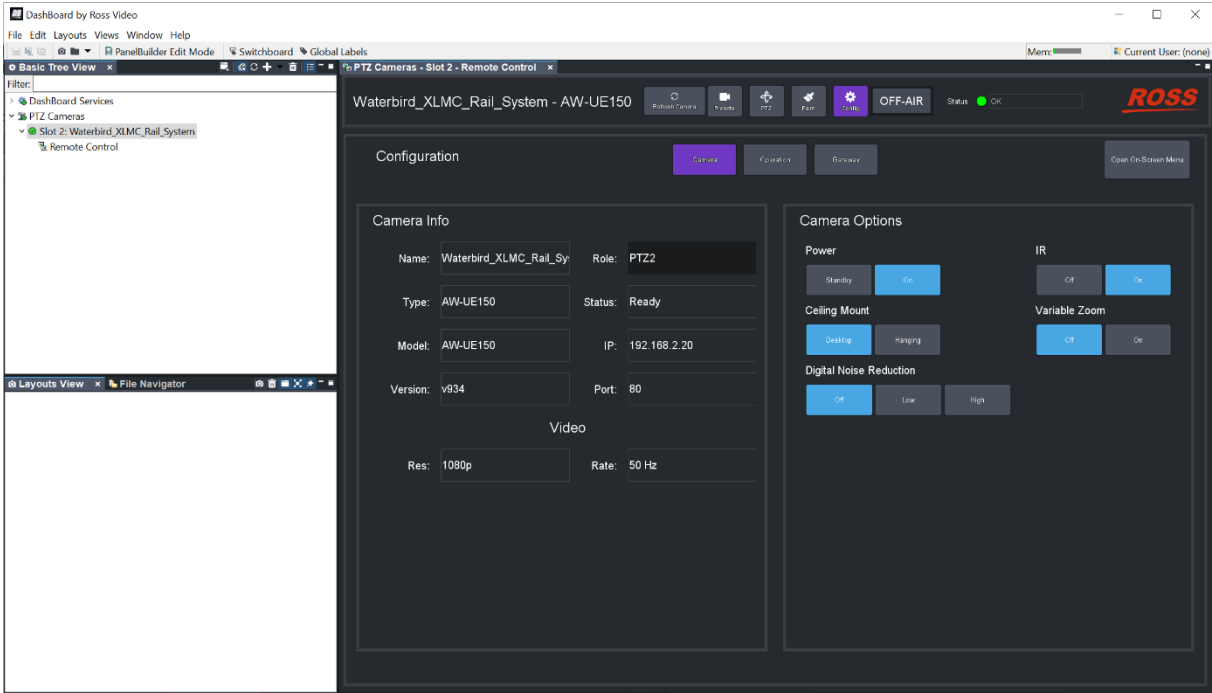
Near -> Fastest acceleration

Far -> Slowest acceleration, highest damping effect

If Auto Focus is in the acceleration is set to 20% of maximal value.

Select Damping (Acceleration): Auto Focus on: 50% acceleration, Auto Focus off: 20% acceleration (=more damping for smoother movements)

In the Tap config the current Firmware Version of the Slider can be checked in the Field “Version”:



## 4. Memory Positions

### 4.1 Saving & Recalling Positions

Like PTZ cameras, also the slider can save specific positions in its memory and recall these positions. The Pmem function of the PTZ console can be used to set, recall and delete these positions. Select the Tap “Presets” for saving, recalling and deleting preset positions.

